



Shaping the Future of Primary Care

Insights from the Advanced Primary Care Pilot

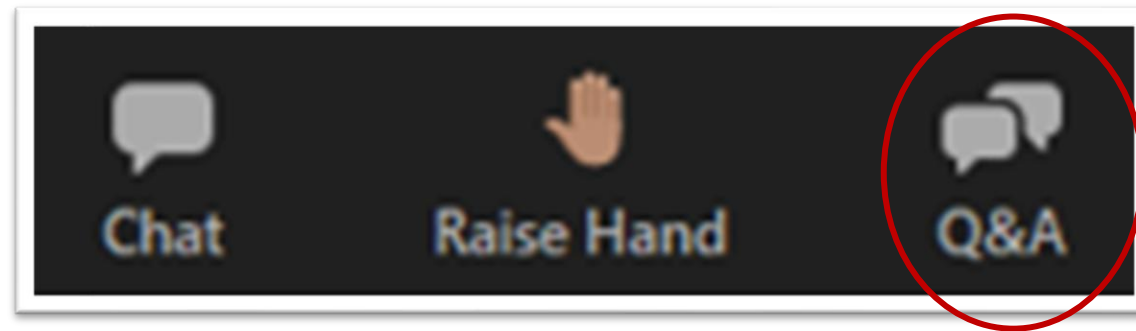
A discussion with Aledade, Bluegrass Community Health, Jefferson Health, NYC H+H, and NCQA

June 10, 2026

Zoom Housekeeping

How to Submit Questions During the Webinar

1. Locate the 'Q&A' icon on the menu bar.
2. During the webinar, please submit questions via the 'Q&A' box.





Polling Question

What best describes your organization?

- Integrated Health System
- Hospital
- Independent Primary Care Practice
- Health Plan
- Other (please share via Q&A box)



Polling Question

Is your organization currently NCQA Accredited, Recognized or Certified?

- Yes
- No
- Not Sure



Polling Question

If yes, in what program(s)?

Select all that apply

- Behavioral Health Accreditation
- Case Management Accreditation
- Community-Focused Care Accreditation
- Credentialing Accreditation or Certification
- Diabetes Recognition Program
- Health Outcomes Accreditation
- Health Plan Accreditation
- PCMH CCE
- PCMH Recognition
- Other, not listed
- No or not sure

Today's Discussion

1 Panelist Introductions

2 Conversation with Pilot Participants

3 Pre-Submitted Q&A

4 Public Comment

5 Closing & Follow Up

Today's Hosts



Amy Awate, MSHSM

*Assistant Director, Recognition Programs
NCQA*



Jeff Sitko, MPH

*Assistant Vice President, Product
Management
NCQA*

Today's Panelists: Advanced Primary Care Pilot Organizations

The logo for Aledade, featuring the word "Aledade" in a blue, sans-serif font.The logo for Jefferson Health, featuring a blue shield icon with a white "J" inside, followed by the text "Jefferson Health" in a bold, dark blue font, and "HOME OF SIDNEY KIMMEL MEDICAL COLLEGE" in a smaller, grey font below it.The logo for NYC Health+Hospitals, featuring the text "NYC" in orange, "HEALTH+" in blue, and "HOSPITALS" in a larger blue font below it.

Aledade at a glance

Physician-led, national leader in value-based care.



3K+ Primary care partners	3M+ Patients
\$1B+ Shared Savings	200+ Contracts
68 MSSP ACOs	46 States + D.C.

As of February 2026, the map shows primary locations for 2026 partner practices. Shared savings data based on internal analysis of data from [2024 CMS ACO Public Use File](#). Past performance is not indicative or future performance. Shared savings not guaranteed.



How our model works



Aledade partners with primary care



across all types of practices and diverse EHRs



to drive **real improvement** in quality and cost



Powered by our **proprietary technology**





WHO WE ARE:

Bluegrass Community Health Center is a Federally Qualified Health Center providing comprehensive, patient-centered care for adults, children, and families across Central Kentucky.

Since opening its first clinic on April 1, 2001, BCHC has grown to serve patients who may otherwise face significant barriers to care, including:

- People experiencing homelessness
- Migrant and seasonal agricultural workers
- Uninsured and underinsured patients
- Individuals and families facing economic, transportation, language, or access barriers

BY THE NUMBERS

11K

Patients Served Annually

45K

Patient Encounters

57%

Best Served in Another Language than English

99%

Patients are at or below 200% of the Federal Poverty Level

41%

of Patients are Uninsured

37%

of Patients are Covered by Medicaid

Where & How We Serve

CLINIC SITES

Versailles Road Clinic

Eagle Creek Clinic

New Life Day Center Clinic

Clark County School Based
Clinic

Mobile Clinic

Outreach

8 COUNTY SERVICE REGION

Fayette • Clark • Bourbon
Jessamine • Garrard
Madison • Scott • Woodford



CORE SERVICES

Comprehensive primary
care across the lifespan

Behavioral health
services

Substance use treatment

Patient-Centered. Integrated. Community-Based.

BCHC's care model is grounded in the Patient-Centered Medical Home approach — emphasizing access, care coordination, whole-person care, and strong relationships between patients and care teams.

NCQA PATIENT-CENTERED MEDICAL HOME RECOGNITION

- Received National Committee for Quality Assurance Patient-Centered Medical Home Recognition in 2013
- First Kentucky-based health center to achieve this recognition

BEHAVIORAL HEALTH INTEGRATION

- March 2020: Received NCQA Distinction in Behavioral Health Integration
- This distinction recognizes practices that go beyond core PCMH requirements to support integrated behavioral health within the primary care setting

EXPANDED SITE RECOGNITION

- November 2024: Two additional sites were recognized — Clark County Clinic and New Life Day Center Clinic
- PCMH-recognized sites now include New Life, Versailles Road, Clark County, and Eagle Creek

BCHC is more than a place patients go for care. It is a health home designed to meet people with access, dignity, coordination, and respect.



Thomas Jefferson University

200+

Graduate & undergraduate programs

8,300+

Students (full/part time)

77,000+

Alumni

17

NCAA Division II teams

Over

\$200 million

in sponsored research awards

1,000+

Patents for new drugs, software innovations, medical devices & diagnostic tools

Data is FY24 - updated January 2025



Jefferson Health

700+

Sites of care

33

Hospital campuses

4,350

Employed physicians

13,600+

Nurses (full/part time)

2,500+

Advanced Practice Clinicians

4

Magnet® designated locations

4

Pathway to Excellence® designations

8.8+ million

Outpatient visits (hospital and physician)

Data is FY24 - updated April 2025



Jefferson Health Plans

362,000+

Total members

316,000+

Medicaid members

13,000+

Medicare members

20,000+

CHIP members

750

Employees

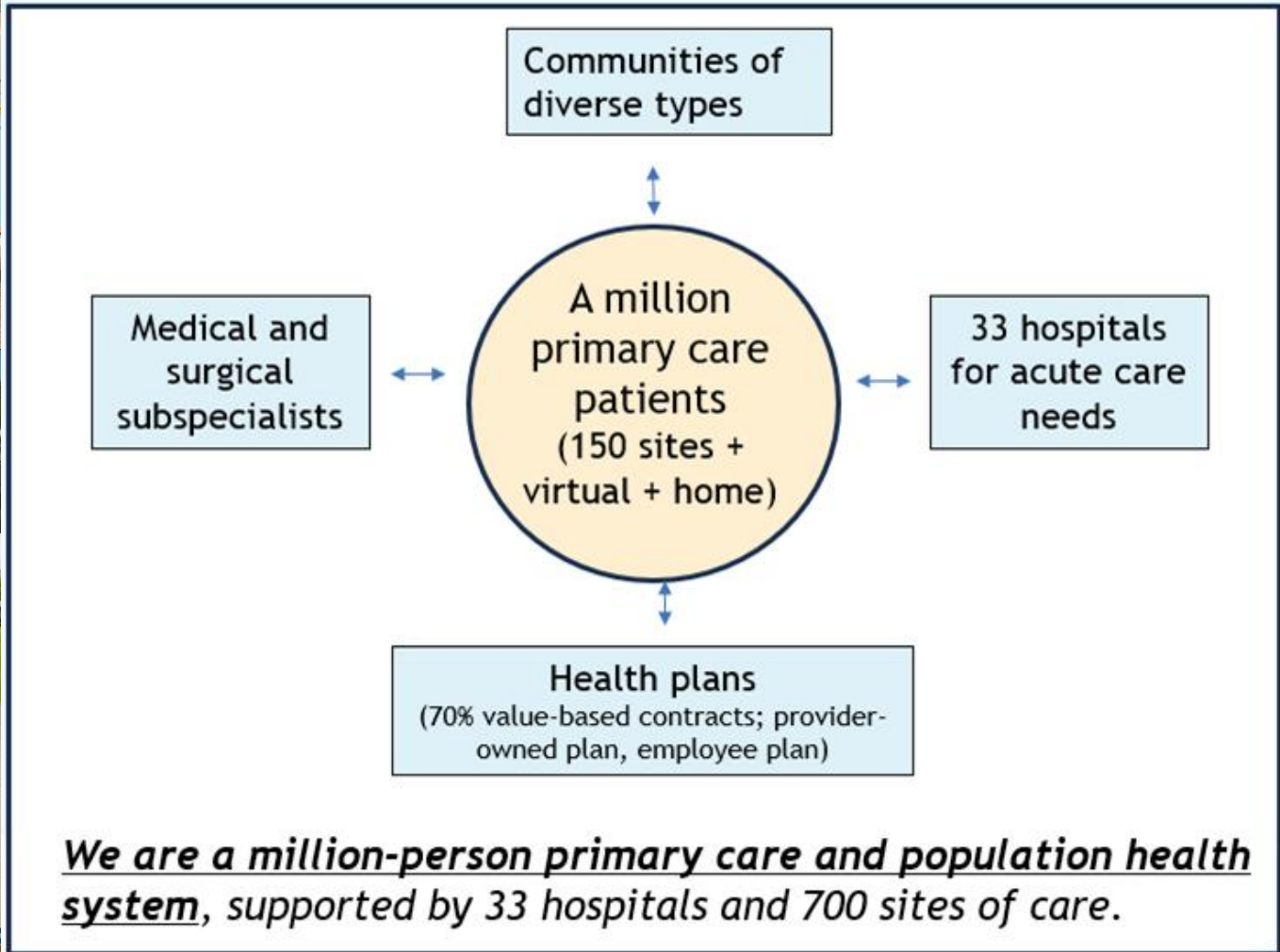
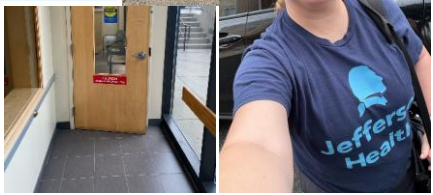
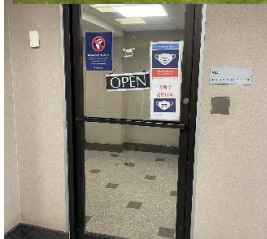
40+

Years of service

13,000+

Individual and family plans

Data is 12/24 - updated January 2025



About NYC H+H



Background

- **History**
 - NYC H+H first pursued PCMH in 2010. There have been 43 sites in total to gain recognition.
 - When PCMH was organized into the tiered framework (3 levels), all of our sites that have pursued PCMH have always achieved the highest level.

- **Current**
 - 26 H+H sites are currently recognized under NYS PCMH (11 Acute and 15 Gotham Health sites).
 - CO PCMH supports the 11 acute sites, while Gotham has its stand-alone team supporting the Gotham sites (FQHCs and neighborhood clinics). CO PCMH continues to serve as advisors to the Gotham PCMH team.
 - Timeline for renewal (Annual Reporting): rolling schedule specific to the site (application season = October through March)

Central Office PCMH Team

- Thomasene Barnes (Director) and Grace Scharf (Assistant Director), advised by Cherilyn Re (Director, Sr. Clinical Practice Nurse Advisor)
 - Serve as SMEs for the sites as well as leadership
 - Liaise between NCQA and H+H; handle all the logistics including invoices and final submission to the NCQA application portal, Q-PASS.
 - *Bonus:* both are NCQA PCMH Certified Content Experts (CCEs) & winners of the NCQA PCMH Quality Award (2019 & 2020)
- Work with various depts. Including but not limited to: Managed Care/Finance, Quality/Patient Experience, and Epic/H2O
- Within Clinical Services & Population Health, also work closely with the Chronic Disease and Collaborative Care teams.

Share Your Feedback

Advanced Primary Care Accreditation

PUBLIC COMMENT OPEN THROUGH JULY 10

Overview of the Proposed Advanced Primary Care Accreditation

Advanced Primary Care Accreditation is designed to define and advance high-quality, coordinated primary care in today's evolving care environment.

It aligns standards and measurement with emerging payment models, stakeholder expectations and data-driven care delivery.

**Submit your feedback by
July 10!**

Core Program Structure

The program contains elements across **six domains**:

- Population Health Management
- Coordinated, Team-Based Care
- Patient Safety and Experience
- Behavioral Health
- Clinical Quality
- Data Management and Exchange

Measures are grounded in the HEDIS[®] measure set and align with established national programs, including:

- eCQMs used in CMS MIPS
- Core Sets
- the Universal Foundation

Your feedback helps confirm the program is:

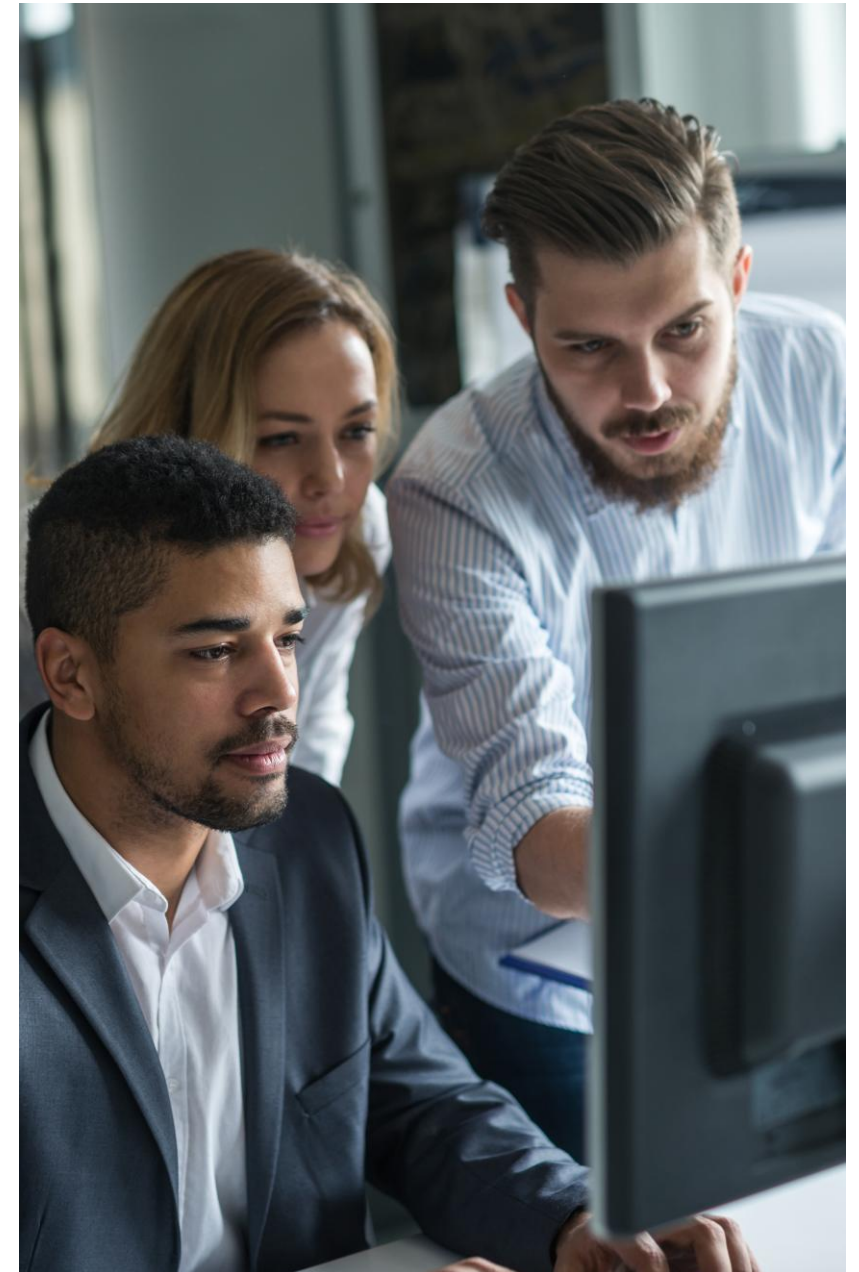
- Practical and feasible.
- Aligned with real-world care models.
- Positioned to improve quality, health equity and patient experience.

How to Submit Your Feedback

1. Read more about the proposed **Advanced Primary Care Accreditation** program
2. **Access resources** to guide you through the proposed program and what requires your feedback
3. Learn how to submit your comments through **My.NCQA**
4. Submit your feedback before **July 10, 11:59 PM ET**

Scan to access the Public
Comment webpage

Visit ncqa.org/commentAPC





Pre-Submitted Questions



Amy Awate, MSHSM

*Assistant Director, Recognition Programs
NCQA*



Jeff Sitko, MPH

*Assistant Vice President, Product Management
NCQA*

you're invited!

NCQA
HEALTH ———
INNOVATION
——— SUMMIT

OCTOBER 4-7, 2026 | ATLANTA, GA
WWW.NCQASUMMIT.COM

**THIS IS
QUALITY**



